

## CONGRATULATIONS

for starting the process to acquire the City of Los Angeles Sidewalk and Park Vending Permit.

### TAKE ADVANTAGE OF THE LOWER FEE \$291.

On July 1, 2020 the fee goes up to \$541

We invite you to visit one of the 8 City of LA BusinessSource Centers. Services are Free!

Bilingual advisors will help you complete the required documentation to secure the City of LA, State of California and County of Los Angeles Permits.

**ITIN** Visit these 2 locations if you need to apply for an ITIN

#### CENTRAL LOS ANGELES **ITIN**

Pacific Asian Consortium in Employment (PACE)  
1055 Wilshire Blvd, #900-B  
Los Angeles 90017  
(213) 353-9400

#### SOUTH LOS ANGELES

Vermont Slauson Economic Development Corporation (VSEDC)  
6109 South Western Avenue  
Los Angeles 90047  
(323) 789-4515

#### NORTH VALLEY

Initiating Change in our Neighborhoods (ICON)  
13269 Van Nuys Blvd  
Pacoima 91331  
(818) 302-6114

#### MID CITY **ITIN**

Pacific Asian Consortium in Employment (PACE)  
2900 Crenshaw Blvd  
Los Angeles 90016  
(323) 293-6284

#### SOUTH VALLEY

Initiating Change in our Neighborhoods (ICON)  
8248 Van Nuys Blvd  
Panorama City 91402  
(818) 894-8800

#### HOLLYWOOD

Managed Career Solutions (MCS)  
4311 Melrose Ave  
Los Angeles 90029  
(323) 454-6115

#### HARBOR

Managed Career Solutions (MCS)  
222 West 6th Street, #320  
Los Angeles 90731  
(310) 221-0644

#### WEST VALLEY

Managed Career Solutions (MCS)  
18645 Sherman Way, Suite 114  
Reseda 91335  
(747) 265-6201

## FOLLOW US TO LEARN MORE

f /BSSLosAngeles  
@bsslosangeles  
@BSSLosAngeles  
w vending.lacity.org



## WANT THIS INFORMATION IN OTHER LANGUAGES?

¿DESEA ESTÁ INFORMACIÓN EN OTROS IDIOMAS?  
是否需要以其他语言来了解此信息?  
この情報を別の国の言葉で希望されますか?  
이 정보를 다른 언어로 받고 싶으세요?  
Хотите эту информацию на других языках?  
GUSTO MO NG IMPORMASYON NA ITO SA IBANG MGA WIKA?  
ต้องการข้อมูลนี้เป็นภาษาอื่นหรือไม่?  
MUỐN THÔNG TIN NÀY BẰNG NGÔN NGỮ KHÁC?  
آیا این اطلاعات را به زبان دیگری می خواهید داشته باشید?  
यह जानकारी अन्य भाषाओं में चाहें?  
ចង់បានព័ត៌មាននេះ ជាភាសាស្រេងទៀត?

ကဏ္ဍတစ်ခုခုကို ရှာဖွေရန် သို့မဟုတ် အခြားစုံစမ်းမှုများအတွက်:

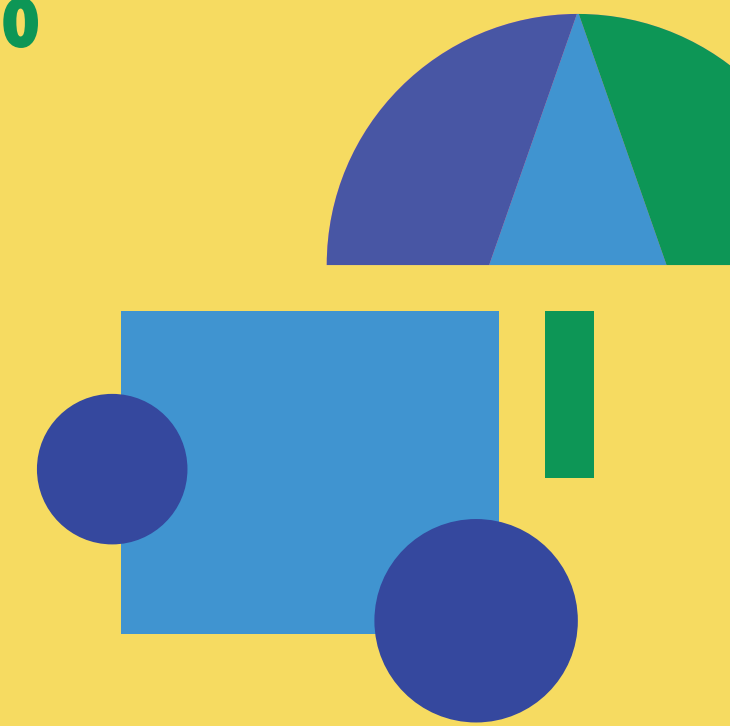
SCAN THIS QR CODE WITH YOUR CELLPHONE'S CAMERA



OR VISIT  
VENDING.LACITY.ORG

# CITY OF LOS ANGELES SIDEWALK & PARK VENDOR PERMIT PROGRAM

PAY LESS BY GETTING  
YOUR PERMIT BEFORE  
JULY 1, 2020



# GET STARTED AND SECURE A VENDING PERMIT

The counselors at the BusinessSource Centers are ready to answer your questions and help you secure the required permits. **Services are Free!**

1.

**START HERE**

DO YOU ALREADY HAVE A SOCIAL SECURITY NUMBER OR ITIN - INDIVIDUAL TAXPAYER IDENTIFICATION NUMBER?

NO

Visit one of these 2 BusinessSource Centers to apply for an ITIN 

YES

Great! You're ready to get started.

Visit one of the 8 City of LA BusinessSource Centers

2.

**VISIT ONE OF THE BUSINESSSOURCE CENTERS NEAR YOU**



Services Are Free!

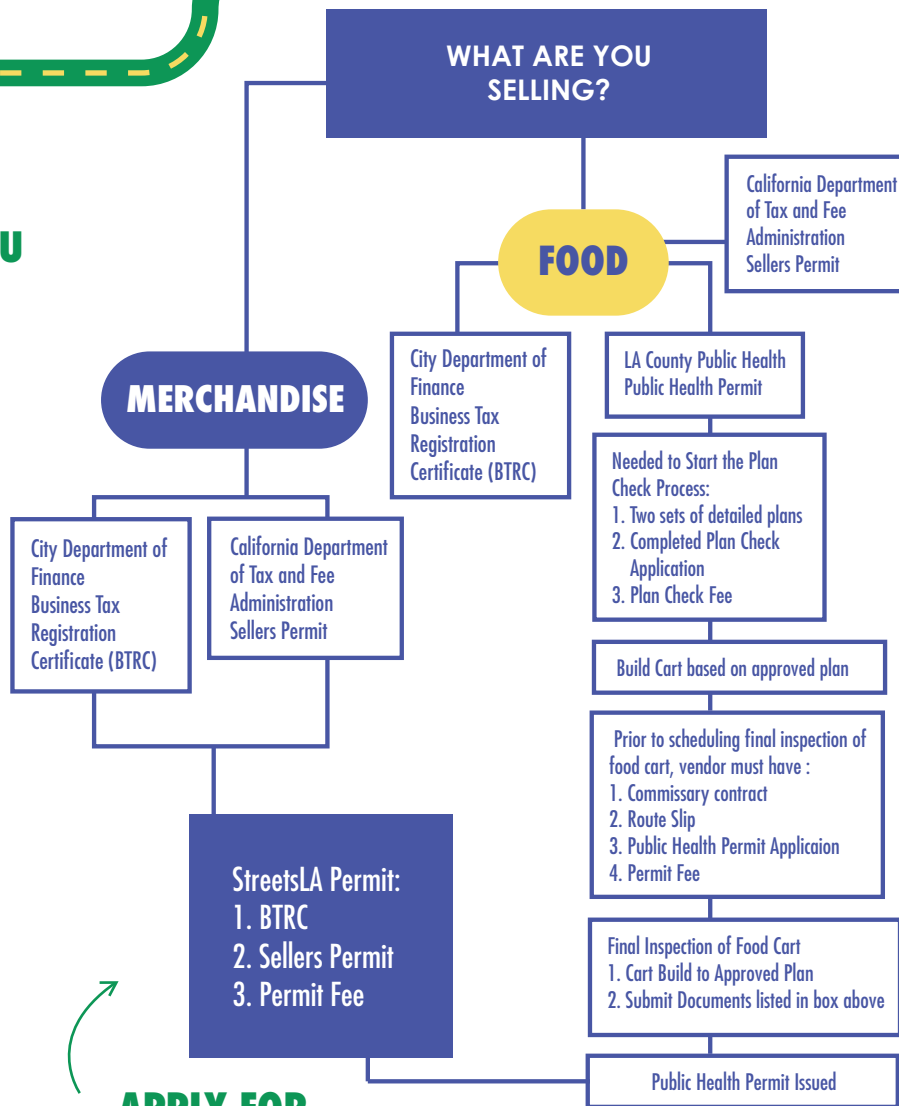


Don't forget to bring a photo ID !!!

3.

## GET YOUR PERMITS

What Permits Do I Need?



**APPLY FOR STREETSLA VENDING PERMIT**

### SIDEWALK AND PARK VENDING PERMIT CHECKLIST

Things you need to bring

- ✓ Government issued photo ID : Driver's License , California Identification, Passport or Consular ID

## FAQ'S

### WHO NEEDS A PERMIT?

Anybody who sells food or merchandise on City of LA sidewalks and City Parks

### WHY DO I NEED A PERMIT?

It protects you as a vendor and ensures health, safety and welfare of residents and visitors

### HOW OFTEN DO I NEED TO RENEW MY PERMIT?

Every 12 months

### WHAT IF I DON'T GET A PERMIT?

Vendors will be fined \$250 to \$1,000 for not having a proper license or permit

### WHERE DO I GET A BTRC?

City of Los Angeles, Office of Finance  
200 N. Spring Street, Room 101  
Los Angeles CA 90012  
(844) 663-4411 | [Finance.lacity.org](http://Finance.lacity.org)

### WHERE DO I GET A SELLERS PERMIT?

State of California, Department of Tax & Fee Administration  
5901 Green Valley Circle, Suite 200  
Culver City CA 90230  
(310) 342-1000 | [cdtfa.ca.gov](http://cdtfa.ca.gov)

### WHERE DO I GET A HEALTH PERMIT?

County of Los Angeles Department of Public Health  
5050 Commerce Drive  
Baldwin Park, CA 91706  
(888) 700-9955 | [publichealth.lacounty.gov](http://publichealth.lacounty.gov)

5.

**CONGRATULATIONS! YOU'RE READY TO OPEN FOR BUSINESS**

### WHERE DO I APPLY FOR THE CITY OF LA SIDEWALK AND PARK VENDING PERMIT?

Visit StreetsLA Headquarters  
1149 S. Broadway, Room 350,  
Los Angeles CA 90015  
(213) 847-6000 | [vending.lacity.org](http://vending.lacity.org)

4.

# ENSURE A SUCCESSFUL START TO YOUR SIDEWALK VENDOR BUSINESS

Following the Rules and Regulations.



**VENDORS MUST POSSESS UP TO DATE BUSINESS, TAX AND HEALTH PERMITS**



**BE AWARE OF NO VENDING AREAS**



**KEEP IT CLEAN. YOU MUST PICK UP TRASH AND RECYCLE**



**KEEP PRODUCE BAGGED/ PROTECTED FROM BUGS**



**KEEP THE SIDEWALK OPEN FOR PEDESTRIANS**



**FOLLOW STATE LAWS ON FOOD VENDING**